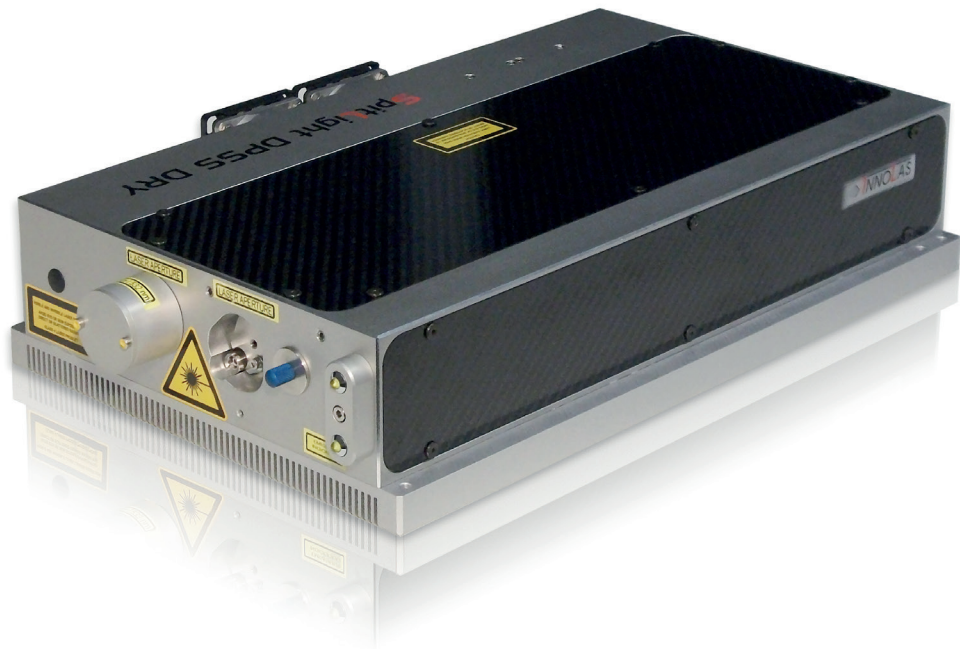


Spitlight DPSS DRY



Features

- * No internal/external water cooling
- * All-in-one: Integrated power supply
- * Low voltage supply input
- * Wide temperature range
- * Robust and stable monolithic design
- * Easy to integrate

Spitlight DPSS DRY

Model	DPSS DRY I	DPSS DRY II
Repetition rate	The following specifications are for 10 Hz	
Pulse Energy [mJ]		
Pulse Energy @ 1064 nm	> 80 mJ	> 150 mJ
Pulse Energy @ 532 nm	> 40 mJ	> 80 mJ
Pulse Energy @ 355 nm	> 20 mJ	> 50 mJ
Energy Stability @ 1064 nm (RMS)	< 0.3%	< 0.3%
Energy Stability @ 532 nm (RMS)	< 1.0%	< 0.8%
Energy Stability @ 355 nm (RMS)	< 2.0%	< 1.5%
Beam Parameters		
Beam Diameter @ 1064 nm	4.0 mm	5.5 mm
Divergence	< 0.5 mrad	< 0.5 mrad
Pointing Stability	< ± 20 µrad	< ± 20 µrad
M ²	< 4	< 4
Pulse Duration @ 1064 nm	6-10 ns	6-10 ns
Temporal Jitter	1 ns	1 ns
Operating Parameters		
Warranted Diode Lifetime	2 years / 2 x 10 ⁹ shots*	2 years / 2 x 10 ⁹ shots*
Cooling System	Integrated peltier / air	Integrated peltier / air
Electrical Supply	Integrated (20-36 V / max. 400 W)	Integrated (20-36 V / max. 400 W)
Weights and Dimensions		
Dimensions Laser Head (L x W x H)	425 x 270 x 92 mm	425 x 270 x 92 mm
Weight Laser Head	18 kg	18 kg

InnoLas follows a policy of continuous product improvement. All specifications are subject to change without notice.

* 2 years after installation or 2 billion (2 x 10⁹) shots – whichever comes first

InnoLas Laser GmbH is DIN EN ISO 9001 certified.



InnoLas Laser GmbH | Justus-von-Liebig-Ring 8 | 82152 Krailling | Germany
Phone: +49 (89) 899 360 - 1400 | Fax: +49 (89) 899 360 - 1499
E-mail: info@innolas-laser.com | Homepage: www.innolas-laser.com

